

Appendix 2 – Relevant Map Extracts

Lismore South Public School – Flood Recovery Rebuild

Document version: Final
Date: 5/03/2025

Hydrology Flooding

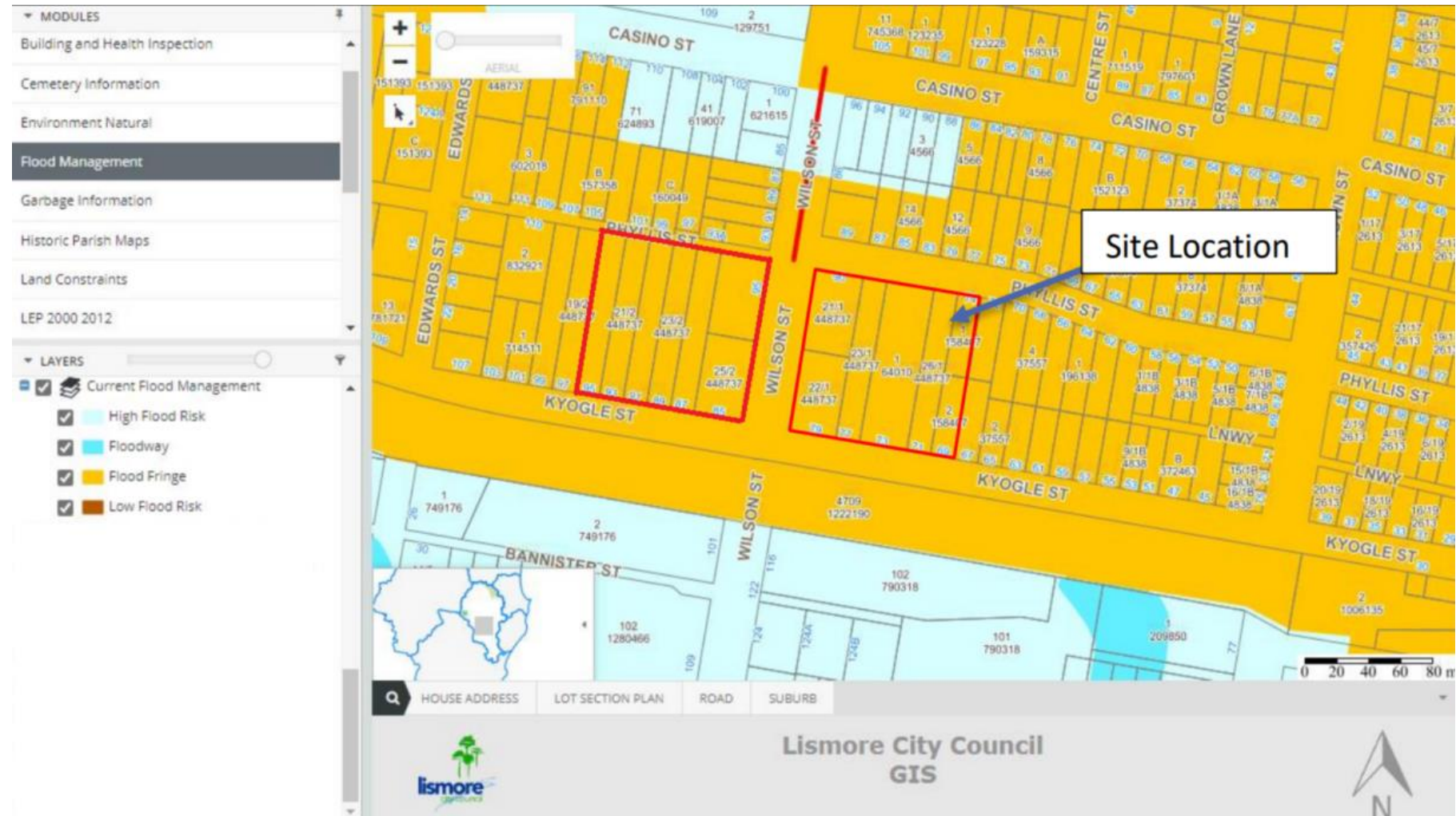


Figure 1 Flood risk categorisation in Lismore LEP (2012) based on the current 2012 DCP definitions (Source: TTW)

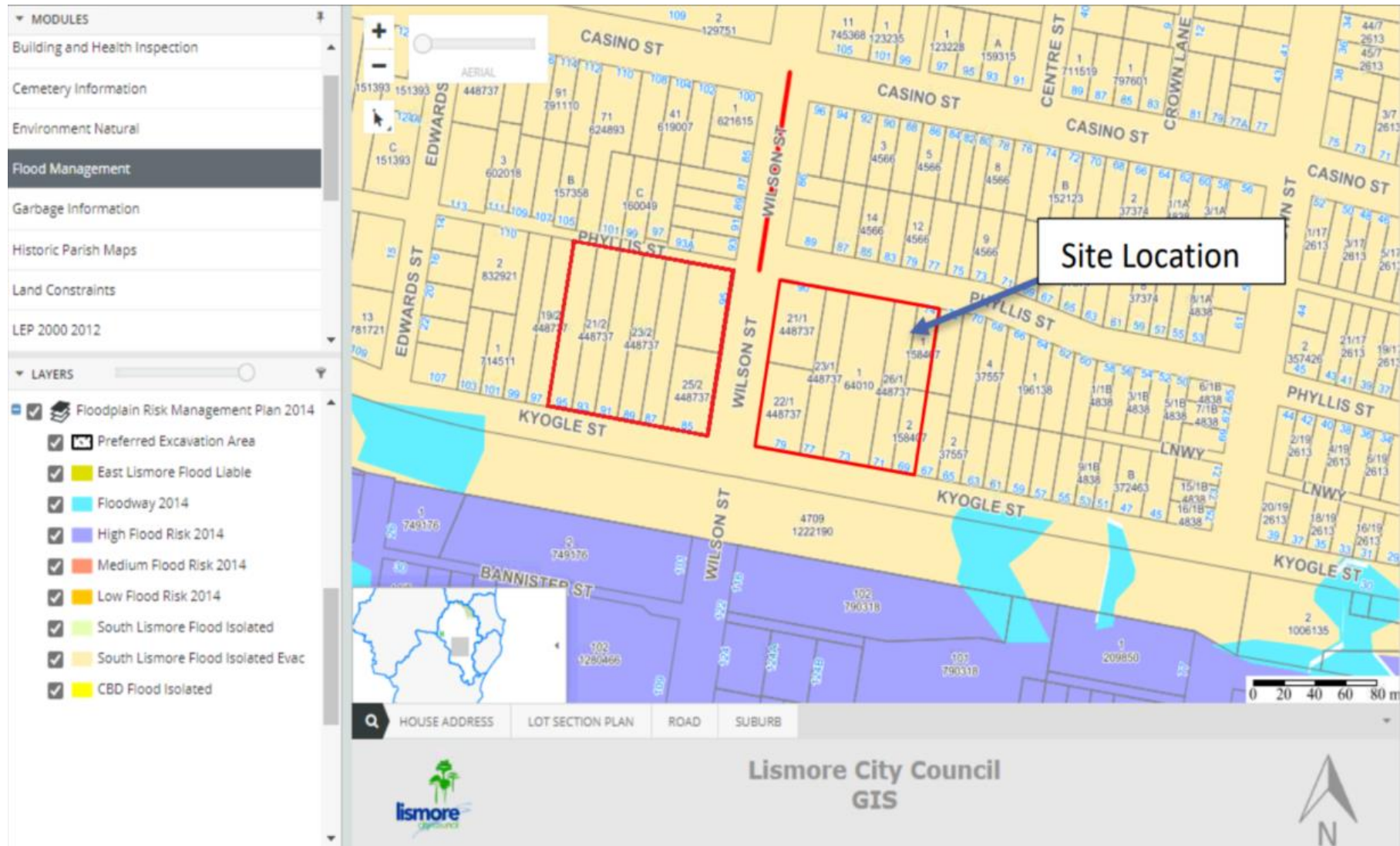


Figure 2 Flood risk categorisation based on the Floodplain Risk Management Plan 2014 (Source: TTW)

Drinking Water Catchment



Figure 3 Drinking Water Catchment (Source: Planning Portal)

Aboriginal Cultural Heritage



Figure 4 AHIMS results within close proximity of the study area. (Source: GML Heritage)

Non-Aboriginal Heritage



Figure 5 Heritage Map (Source: Planning Portal)

Acid Sulfate Soils



Figure 6 Acid Sulfate Soils Map (Source: Planning Portal)

Bushfire

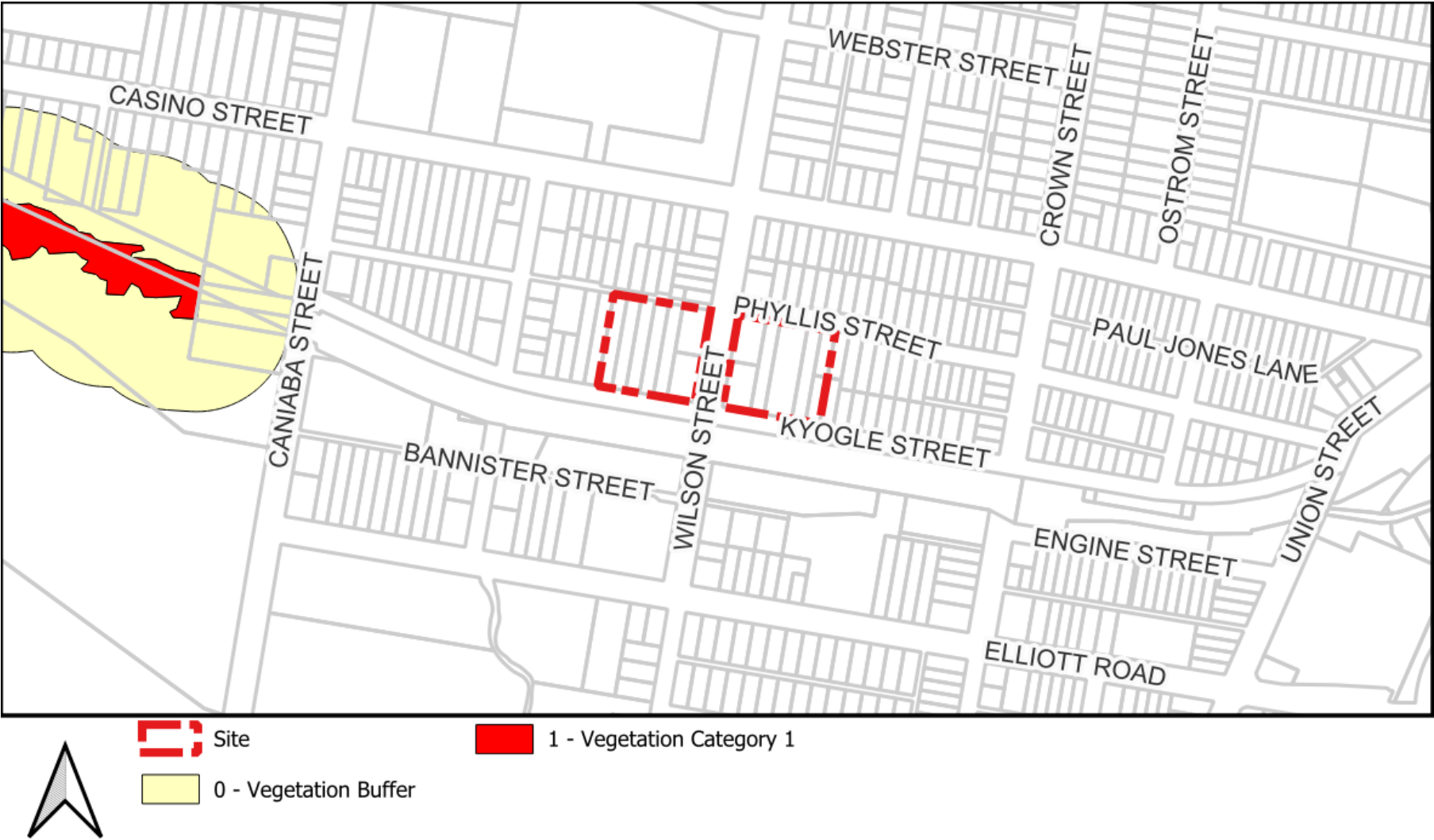


Figure 7 Bushfire Map (Source: Planning Portal)

Aviation

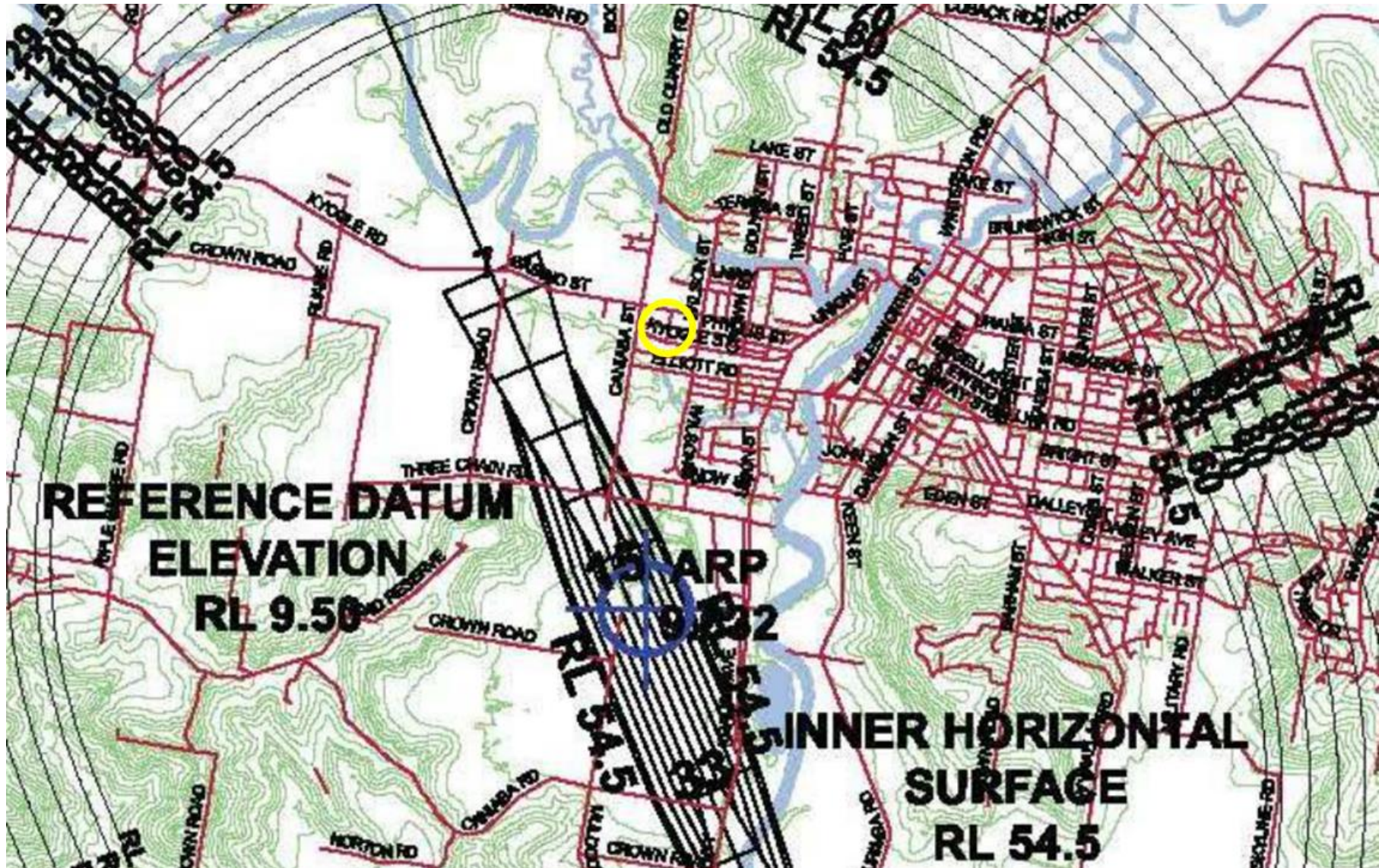


Figure 8 Extract of Obstacle Limitations Surface Map (Source: Lismore Development Control Plan 2012)

Vegetation and Biodiversity

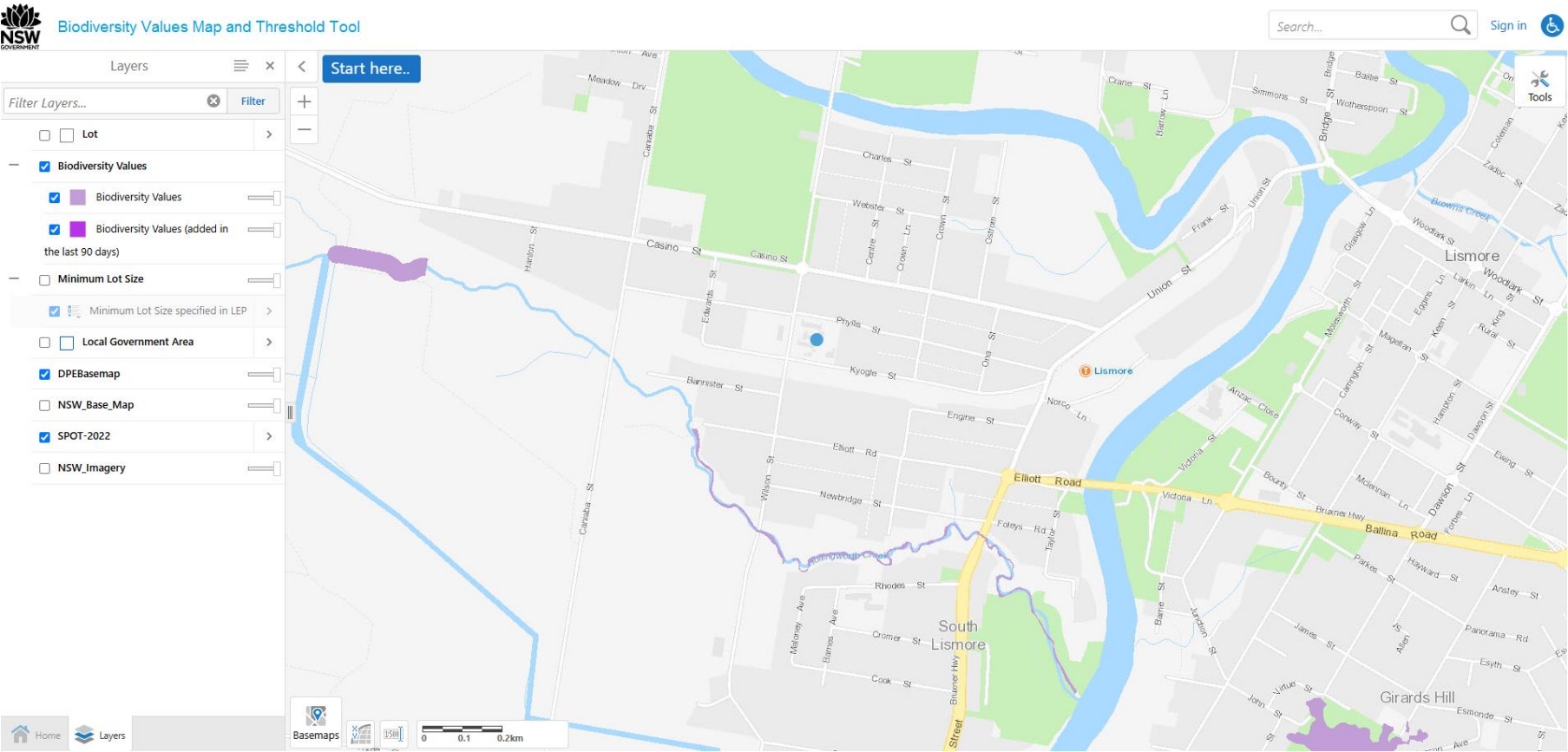


Figure 9 Biodiversity Value (BV) land (Source: Biodiversity Values Map and Threshold Tool)